



## **EL5 / EL7 Solutions**

Conductive & Dissipative  
Rolls and Tiles

**Gerflor**<sup>®</sup>

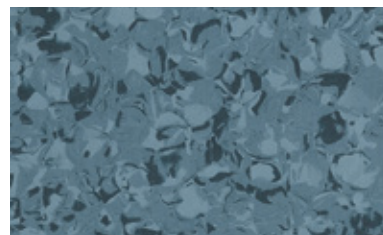
# New construction > Permanent adhesive

## Dissipative

### Mipolam EL7



4111 Raffia



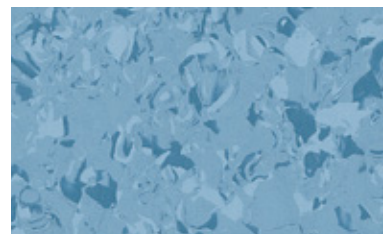
4166 Thistle



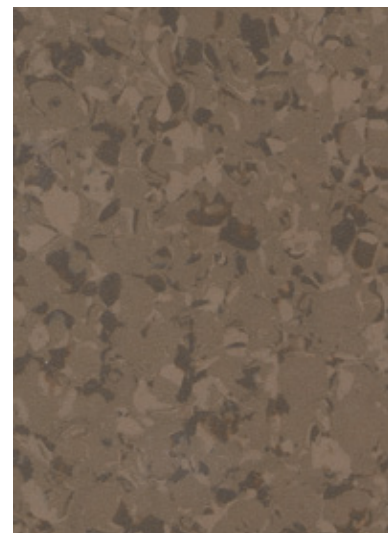
4110 Violet Grey



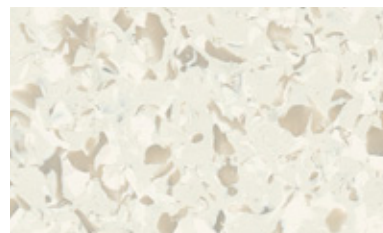
4132 Citrine



4116 Sapphire



4144 Havana Brown



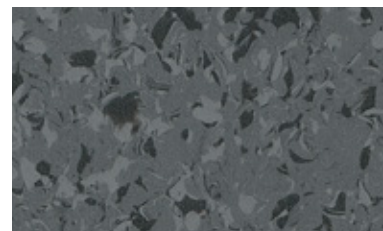
4101 Quartz



4120 Silver Grey

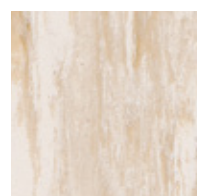


4124 Smoked Opal



4159 Grey Storm

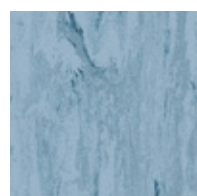
### Mipolam Robust EL7



0003 Ivory



0002 Platinum



0112 Storm



0306 Green



0005 Steel



0013 Pewter

# New construction > Permanent adhesive

## Nouveau projet > Collage permanent

MIPOLAM EL7 / MIPOLAM ROBUST EL7 / MIPOLAM EL5 / MIPOLAM TECHNIC EL5



Permanent adhesive installation on prepared subfloor  
*Pose adhésive permanente sur support préparé*



Ideal for new projects  
*Idéal nouveaux projets*



Resistance to high traffic  
*Résistance au trafic intense*



• Easy maintenance  
*Facilité d'entretien*

• No wax for life  
*Pas de métallisation durant toute la durée de vie du produit*



Rolls installation:  
*Installation rouleaux :*

Watertight system (hot welding)  
*Système étanche (bords droits soudés)*



# Renovation > Adhesive free installation

## Rénovation > Pose sans colle

GTI EL5 CONNECT / GTI EL5 CLEANTECH



Hard wearing  
*Résistance à l'usure*

- Resistance to high traffic  
*Résistance au trafic intense*
- Withstands heavy loads  
*Résistance aux charges lourdes*



Evercare

- Easy maintenance and cleaning  
*Facilité d'entretien*
- No wax for life  
*Pas de métallisation durant toute la durée de vie du produit*

### GTI EL5 CONNECT

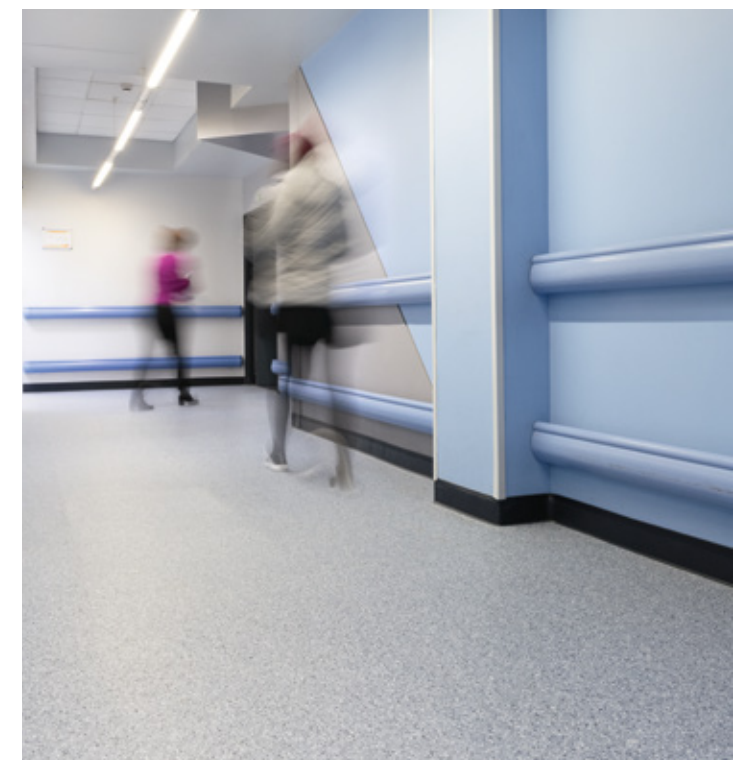


Direct and fast installation, easy renovations & replacement  
*Pose rapide, facile à rénover et remplacer*

### GTI EL5 CLEANTECH



Watertight system, conductive welding rod (hot welding)  
*Système étanche, cordon électro conducteur (soudure à chaud)*



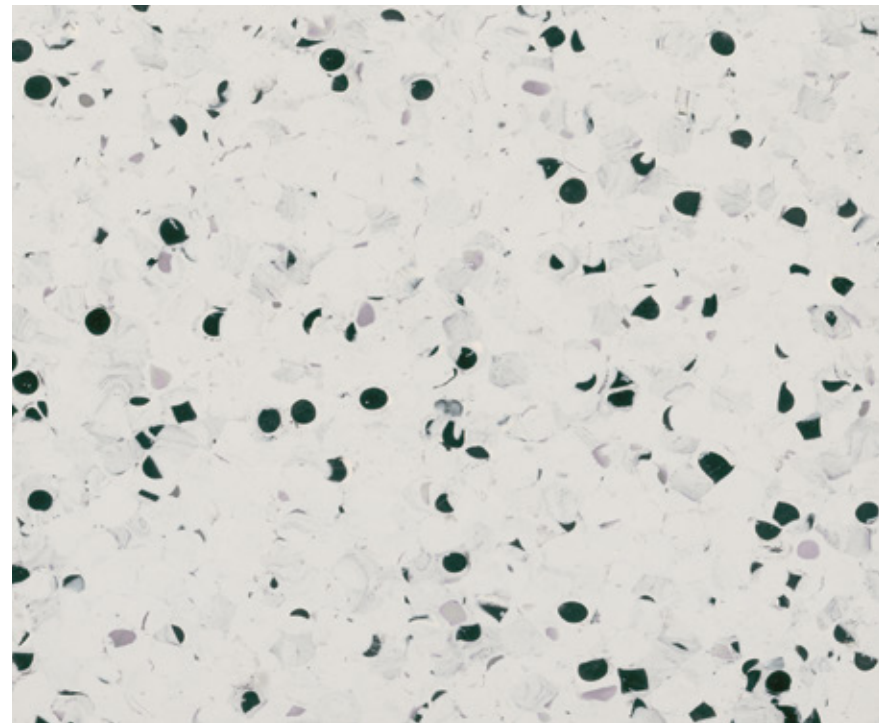
Copper strip enabling earthing  
Code: 0586 0001 - Roll: 200 lm

*Feuillard cuivre permettant la mise à la terre*  
Code : 0586 0001 - Rouleau : 200 ml

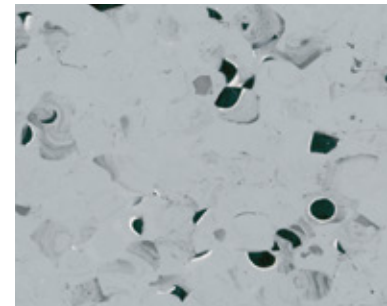
# New construction > Permanent adhesive Conductive

Mipolam EL5

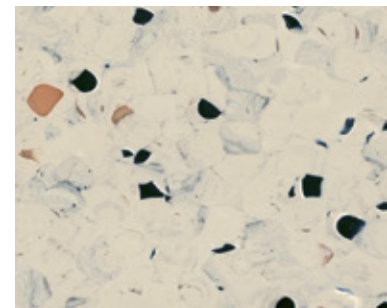
 EVERCARE™  $10^4 \leq Rt \leq 10^6 \Omega$  (EN 1081)



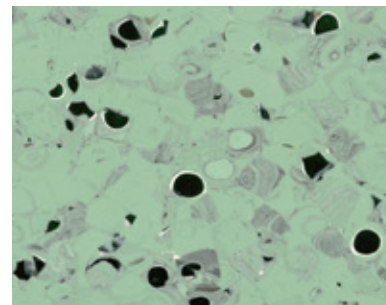
0350 Light Grey



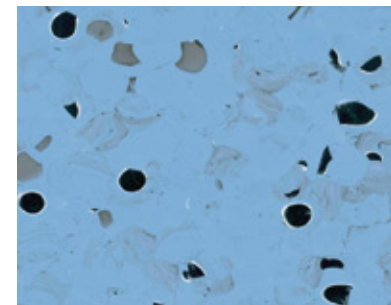
0352 Grey



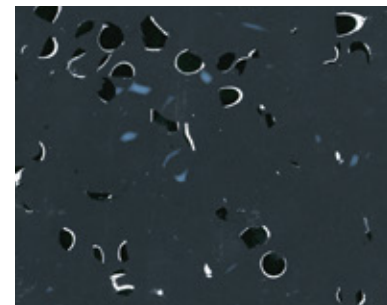
0353 Beige



0355 Green




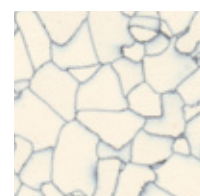
0354 Blue



0351 Black

## Mipolam Technic EL5

 EVERCARE™  $10^4 \leq Rt \leq 10^6 \Omega$  (EN 1081)



0635 White



0636 Grey



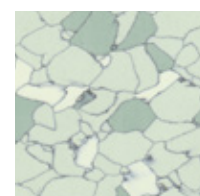
0640 Beige



0637 Light Blue



0638 Blue

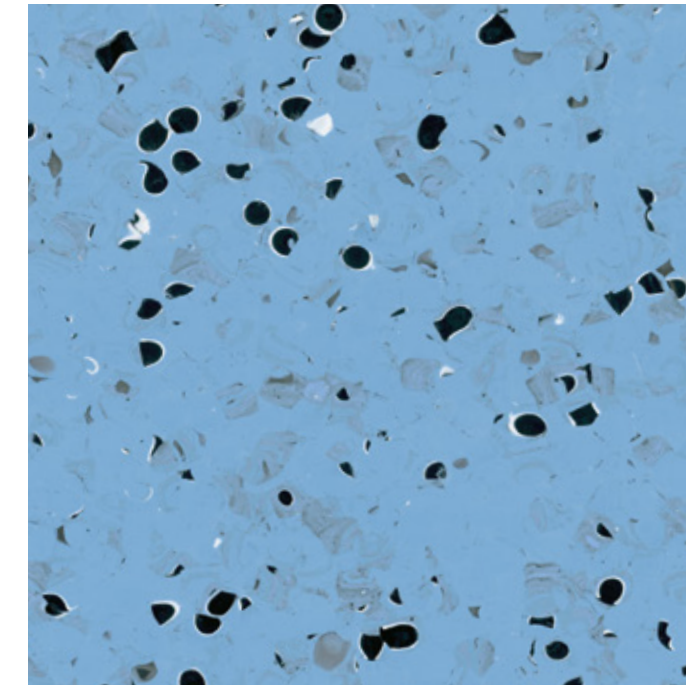


0639 Green

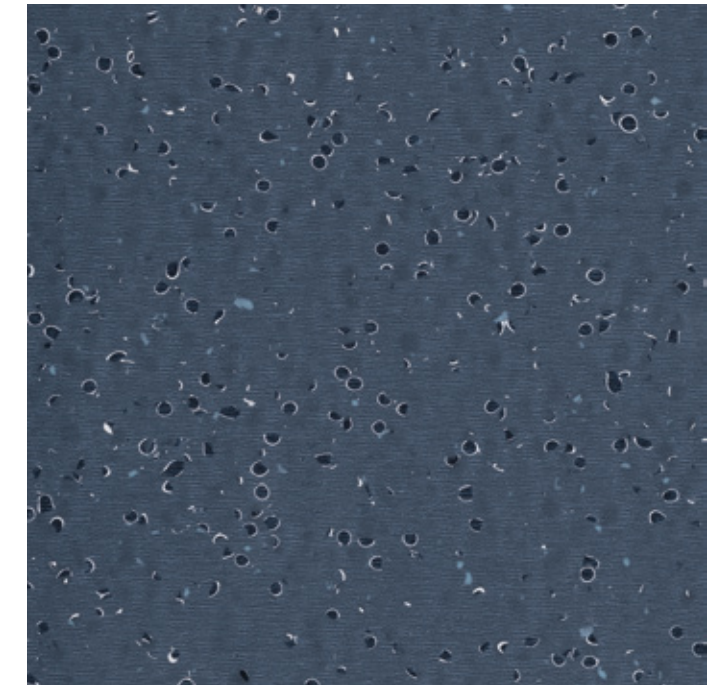
# Renovation > Adhesive free installation Conductive

GTI EL5

 EVERCARE™  $5 \times 10^4 \leq Rt \leq 10^6 \Omega$  (EN 1081)

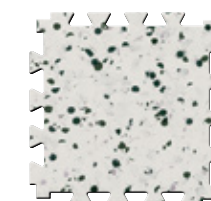
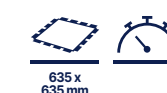


**CONNECT** 0354 Blue

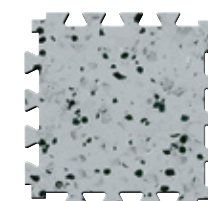


**CLEANTECH** 0351 Black

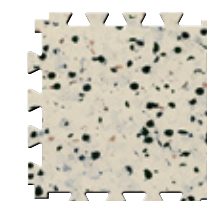
## GTI EL5 Connect



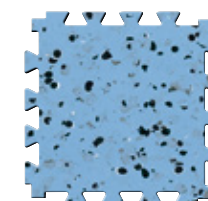
0350 Light Grey



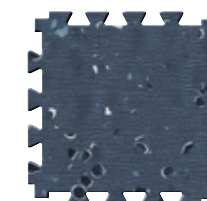
0352 Grey



0353 Beige

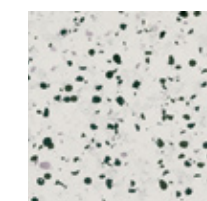


0354 Blue

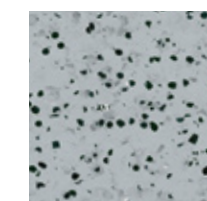


0351 Black

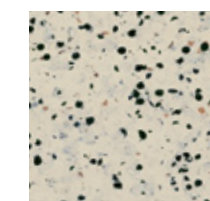
## GTI EL5 Cleantech



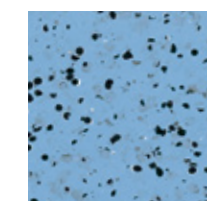
0350 Light Grey



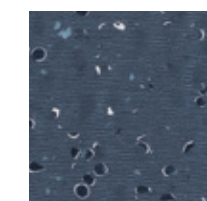
0352 Grey



0353 Beige



0354 Blue



0351 Black

# EL5 / EL7 Solutions

gerflor.com / follow us



\* Information sur le niveau d'émission de substances volatiles dans l'air intérieur, présentant un risque de toxicité par inhalation, sur une échelle de classe allant de A+ (très faibles émissions) à C (fortes émissions)

## Description / Description

	Mipolam EL5	Mipolam Technic EL5	Mipolam EL7	Mipolam Robust EL7	GTI EL5 Connect	GTI EL5 Cleantech
Total thickness / Épaisseur totale	EN ISO 24346	mm	2.00	2.00	2.00	6.00
Wearlayer thickness / Épaisseur couche d'usure	EN ISO 24340	mm	-	-	-	2
Weight / Poids	EN ISO 23997	g/sq.m	2985	3800	3100	9240
Width/length of sheet / Largeur/Longueur lés	EN ISO 24341	cm / lm	200 / 20	-	200 / 20	-
Tile size / Format dalles	EN ISO 24342	mm	-	608 × 608	608 × 608	650 × 650
Number of tiles per package / Nombre de dalles par boîte	-	-	-	20	-	20

## Classification / Classification

Standard / product specification / Norme / Spécification produit	-	-	EN ISO 10581	EN ISO 10581	EN ISO 10581	EN ISO 10581	EN ISO 10582
European classification / Classement européen	EN ISO 10874	class	34-43	34-43	34-43	34-43	34-43
Classement UPEC	-	-	U4P3E2/3C2	-	U4P3E2/3C2	-	-
Certification  UPEC	QB 30	n° certif.	301-056.1	-	332-013.1	-	-
Fire rating / Réaction au feu	EN 13501-1	class	Bfl - s1	Bfl - s1	Bfl - s1	Bfl - s1	Bfl - s1
Electrical resistance <sup>(1)</sup> / Résistance électrique <sup>(1)</sup>	EN 1081	Ohm	10 <sup>4</sup> ≤ Rt ≤ 10 <sup>6</sup>	10 <sup>4</sup> ≤ Rt ≤ 10 <sup>6</sup>	10 <sup>6</sup> ≤ Rt ≤ 10 <sup>8</sup>	10 <sup>6</sup> ≤ Rt ≤ 10 <sup>8</sup>	5 × 10 <sup>4</sup> ≤ Rt ≤ 10 <sup>6</sup>
Static electrical propensity / Potentiel de charge	EN 1815	kV	< 2	< 2	< 2	< 2	< 2
Slip resistance wet / Glissance	EN16165:2021 - Appendix B (DIN 51130)	class	R9	-	R9	-	R9

## Performance / Performance

Type binder content / Teneur en agent liant	ISO 10581	Type	I	II	II	II	-
	ISO 10582	Type	-	-	-	-	I
Dimensional stability / Stabilité dimensionnelle	EN ISO 23999	%	≤ 0.40	≤ 0.40	Sheet ≤ 0.40 Tile ≤ 0.25	Sheet ≤ 0.40 Tile ≤ 0.25	≤ 0,40
Shore hardness / Dureté shore	EN ISO 868	Hd	-	-	-	-	≥ 90
Residual indentation (average measured value) / Poinçonnement statique rémanent (valeur moyenne mesurée)	EN ISO 24343-1	mm	≈ 0.02	≈ 0.03	≈ 0.02	≈ 0.03	-
Castor chair test (Type H) / Essai de la chaise à roulettes (type H)	ISO 4918	-	OK	OK	OK	OK	OK
Thermal conductivity / Conductivité thermique	EN ISO 10456	(m.K)	0.25	0.25	0.25	0.25	0.25
Colour fastness / Solidité lumière	EN 20 105 - B02	degree	≥ 6	≥ 6	≥ 6	≥ 6	≥ 6
Surface treatment / Traitement de surface	-	-	Evercare™	-	Evercare™	-	Evercare™
Chemical product resistance / Résistance aux produits chimiques	EN ISO 26987	-	OK	OK	OK	OK	OK
Anti-bacterial activity (E.coli - S. aureus - MRSA) <sup>(3)</sup> / Activité anti-bactérienne (E. coli - S. aureus - MRSA) <sup>(3)</sup>	ISO 22196	-	> 99 % inhibits growth ne favorise pas la prolifération	-	> 99 % inhibits growth ne favorise pas la prolifération	-	-
Anti-viral activity (human coronavirus 229E) / Activité Anti-virale (Coronavirus humain)	ISO 21702	-	99.7% after 2h / 99.7% après 2h	-	99.7% after 2h / 99.7% après 2h	-	-

## Environment / Indoor Air Quality / Environnement / Qualité De L'air

TVOC after 28 days / TVOC après 28 jours	ISO 16000-6	µg/m <sup>3</sup>	< 10	< 10	< 10	< 10	< 10
Certification / Certification	-	-	Floorscore®	-	Floorscore®	-	Floorscore®

## CE Marking / Marquage CE

	EN 14041	-			
	-	-			

(1) Measured before installation / Mesure avant installation. (2) Measured with ESD shoes compliant with norms / Mesurée avec chaussures ESD conformes aux normes.

(3) The implementation of an effective cleaning method is the best defence against infection / Le respect des protocoles d'entretien des sols est la meilleure garantie contre les infections

Product Descriptions, Technical Data Sheets, Installation & Maintenance guidelines, Complementary ranges available on our Gerflor websites.

Rubber leaves indelible stains on vinyl floorings: do not use mats with rubber backing and replace tubular furniture feet with those made of PVC or polyamide. Place mats of sufficient length at entrances to reduce outside sources of dirt.

Proscrire tout élément ou partie d'éléments en caoutchouc susceptible d'être en contact direct avec nos revêtements (embouts de chaises, mobiliers...) et utiliser exclusivement des embouts en PVC ou Polyéthylène. Pour les matériaux ProtecSol®, ne jamais effectuer de décapage avec les disques abrasifs (vert, marron ou noir) ou des procédés risquant de détériorer le traitement de surface (abrasifs, solvant...).

**IMPORTANT:** The information contained in this document is valid from 01/09/2025 and is subject to change at any time without notice. In the context of constantly changing technology, our customers are responsible, prior to any use, for checking with us that this document is the version in force.

**IMPORTANT :** Les informations contenues dans ce document sont valables à compter du 01/09/2025 et susceptibles d'être modifiées sans préavis. L'évolution de la technique étant permanente, il appartient à notre clientèle, avant toute mise en œuvre, de vérifier auprès de nos services que le présent document est bien celui en vigueur. Principes de mise en œuvre détaillés, accessoires (profilés, plinthes) et notices d'entretien : disponibles sur demande.

Service Express Gerflor : Conseils techniques & échantillons

e-mail : contactfrance@gerflor.com N°Azur 0 810 569 569

PRIX APPEL LOCAL

## we care / we act our commitments for 2030

 <b>climate</b> <b>-30% CO<sub>2</sub></b> scopes 1, 2, 3 in tons eq. CO <sub>2</sub> vs 2019 Science Based Targets <sup>(1)</sup>	 <b>resources</b> <b>75%</b> biobased, mineral and recycled content <sup>(2)</sup> <b>30%</b> recycled content <sup>(3)</sup>	 <b>circularity</b> <b>65 000 tons</b> annual volume recycled <sup>(4)</sup> <b>45%</b> looselay <sup>(5)</sup>	 <b>health &amp; well-being</b> <b>100%</b> products better than Indoor Air Quality standards <sup>(6)</sup> <b>95%</b> sales covered by EPD <sup>(7)</sup>	 <b>people</b> <b>30%</b> women <sup>(8)</sup> <b>40%</b> internal mobility <sup>(9)</sup> <b>Towards 0</b> accident <sup>(10)</sup>
---	---	--	--	---

**More details:** 1. Scopes 1, 2 & 3, in absolute value, market-based. Trajectory approved by SBTi (Science Based Targets Initiative). 2. Origin of raw materials for the entire Floor & Wall portfolio, on average, by weight; including 15% virgin salt, a primary element in vinyl manufacturing. Compared to 71% in 2024. 3. Average content in the Floor & Wall vinyl portfolio, by weight. Compared to 21% in 2024. 4. Recycled in our factories and recycling units. Compared to 59 040 tons in 2024. 5. % of Floor activity with non-glued products, easy to remove, easy to re-use. Compared to 40% in 2024. 6. 100% of vinyl and inoleum sold to the building market below 100 micrograms/m<sup>3</sup> (TVOC 28 days). 7. % of Floor & Wall activity covered by Environmental Product Declarations (EPD). Compared to 44% in 2024. 8. % women in our global workforce and among our managers. Compared to respectively 26% and 27% in 2024. 9. % job openings filled with internal hires worldwide. Compared to 25% in 2024. 10. Towards 0 accident: Lost time accident per million hours worked: below 3 vs 8,9 in 2024, for Gerflor employees worldwide.

# Gerflor®